



Let's have a quality life

2025  
British products  
Series

# Product Introduction



LED light source ✖ Precision for Excellence



Wattage	QTY	GW	CBM	Voltage	BASE
3	100	3.13	0.021	220V	E27 B22
5	100	4.25	0.026		
7	100	5.88	0.046		
9	100	6.57	0.057		
11	100	7.37	0.061		
15	50	4.86	0.042		
18	50	9.7	0.054		



Wattage	QTY	GW	CBM	Voltage	BASE
5	100	3.9	0.033	220V	E27 B22
10	100	5	0.056		
15	100	6	0.082		
20	50	6.3	0.072		
30	40	7.4	0.1		
40	30	8.2	0.12		
50	20	6.9	0.12		



Wattage	QTY	GW	CBM	Voltage	BASE
15	100	10	0.075	220V	E27 E40
30	50	11	0.097		
40	30	9.35	0.081		
50	20	8.75	0.092		



Wattage	QTY	GW	CBM	Voltage	BASE
20	50	10.84	0.06	220V	E27 B22
30	24	7.67	0.057		
40	15	7.5	0.057		
50	15	7.57	0.057		
70	12	9.25	0.067		



V-1041

QTY	GW	CBM
12	16	0.078



V-55B

QTY	GW	CBM
12	14.4	0.079



V-7121

QTY	GW	CBM
10	6.5	0.0657



V-D357

QTY	GW	CBM
20	8.5	0.099



V-7100

QTY	GW	CBM
10	8.7	0.0885



V-7032

QTY	GW	CBM
10	6.5	0.066

Specification	5050	2835	5730	3030
Number Of Chips	5mm/6mm/8mm/10mm/12mm/15mm/18mm 52/60/72/88/96/120/ 180/240/ 276/368			
Color	White ■ Yellow ■ Blue ■ Ice Blue ■ Red ■ Green ■ Pink ■ RGB ■			
Cutting Line	Yes/No			
Voltage	110V/ 220V			
Package Size	310x310x130mm			



V-46

QTY	GW	CBM
30	17.3	0.088



PK-06 B

QTY	GW	CBM
50	18.65	0.194



PK-06 A

QTY	GW	CBM
50	13.15	0.114



Wattage	PAR/	6W	12W	18W	24W
QTY		100	40	30	20
CBM		0.078	0.072	0.077	0.096
G.W		11.5	12.5	12.5	14

Wattage	PAR/	6W	12W	18W	24W
QTY		100	40	30	20
CBM		0.078	0.072	0.077	0.096
G.W		11.5	12.5	12.5	14

Wattage	KSD-XM2D/30W	50W	100W	150W	200W	300W	
QTY		20	10	5			
CBM		0.051	0.04	0.035	0.047	0.047	0.07
G.W		10					

Voltage Regulator ✂



Model	THG/50	75	100	150	200	250	300	500	1000	1500	2000	2500	3000	4000	5000	7500	10000														
QTY		16			8			2			1																				
CBM		0.021			0.018			0.025			0.026			0.028			0.03			0.02			0.03			0.046			0.046		
GW	18	18.5	19.5	24	27	28	20.5	25	27	15	18	23.5	28.5	21	23	30	33														



Model	FVR/500	1000	1500	2000	3000	5000
QTY	8	4		1		
CBM	0.051	0.045		0.031		0.036
GW	22	19.6	22.2	26	11.6	16.5



Model	CVR/350	500	1000	1500	2000	3000	4000	5000				
QTY		6		4		2		1				
CBM		0.031		0.045		0.0315		0.046	0.025	0.023		
GW		24		28		22.5		29	19	25		28



Model	GNK/500	1000	1500	2000	3000	5000
QTY	8	4		1		
CBM	0.054	0.042		0.035		
GW	22	20	22	26	12	16



Model	DVRD/1000	1500	2000	3000	5000	8000	10000
QTY	6	4		2		1	
CBM	0.053	0.058	0.058	0.057	0.057	0.048	0.048
GW	18.39	19.9	21.76	17.4	23.54	16.32	18.32

Electricity meter ✂



**DDS 1531 H**

QTY	GW	CBM
20	10.95	0.044



**DDS 1531 Black**

QTY	GW	CBM
10	9.5	0.041



**DDS 1531 N Black**

QTY	GW	CBM
10	9.35	0.041



**DDS 862 B**

QTY	GW	CBM
12	14.05	0.059



**DDS 1531 N**

QTY	GW	CBM
10	9.35	0.041



**DDS 1531**

QTY	GW	CBM
10	9.25	0.041



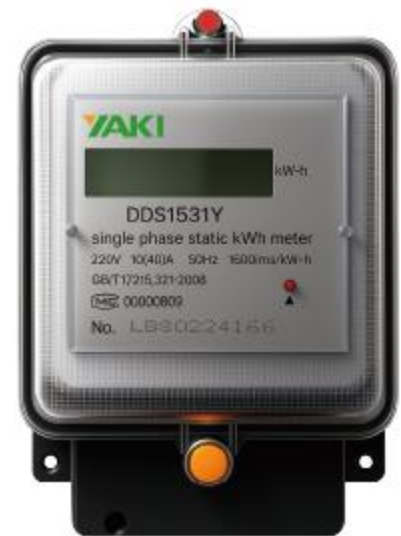
**DDS 1531 S**

QTY	GW	CBM
20	9.55	0.033



**DDS 1531 E**

QTY	GW	CBM
30	9.8	0.032



**DDS 1531 Y**

QTY	GW	CBM
30	13.6	0.044



**DDS 1531 D**

QTY	GW	CBM
30	13.95	0.044



**DDS 862**

QTY	GW	CBM
30	12.95	0.059



**DDSY 1531**

QTY	GW	CBM
24	14.62	0.062



**TK10DU 10A**

QTY	GW	CBM
40	16	0.0372



**TK50D 50A**

QTY	GW	CBM
24	17	0.0475



**TK50D 60A**

QTY	GW	CBM
24	20.8	0.0475



**HB-400W**

QTY	GW	CBM
20	16.5	0.045



**HB-1000W**

QTY	GW	CBM
10	19	0.055



**HB-3000W**

QTY	GW	CBM
4	16.5	0.087



**SK60D(60A)**

QTY	GW	CBM
24	20.8	0.0475



**SK60D(80A)**

QTY	GW	CBM
12	14.52	0.0489



**SK60D(100A)**

QTY	GW	CBM
12	14.52	0.0489



**12V7A B**

QTY	GW	CBM
5	10	0.007



**12V65A GB**

QTY	GW	CBM
1	17.5	0.014



**12V200A G**

QTY	GW	CBM
1	51	0.036



Model	YSF/45-A801R
QTY	1
CBM	0.045
GW	6.95
Voltage	220V



Model	THG/1000VA	1500VA	2000VA	3000VA	5000VA	8000VA	10000VA
QTY	4			2		1	
CBM	0.045			0.049	0.09	0.053	
GW	14	16	18	8.5	21.9	17.5	19
Voltage	1. Input voltage 100V-260V; 2. Output voltage 220V+10%; 3. Over-voltage, over-temperature protection; 4. 1KVA-2KVA without overcurrent; 3KVA-20KVA with overcurrent protection; 5. 90% of the power of the toroidal transformer.						



Model	YSF/45-D16K
QTY	2
CBM	0.061
GW	6.25
Voltage	220V



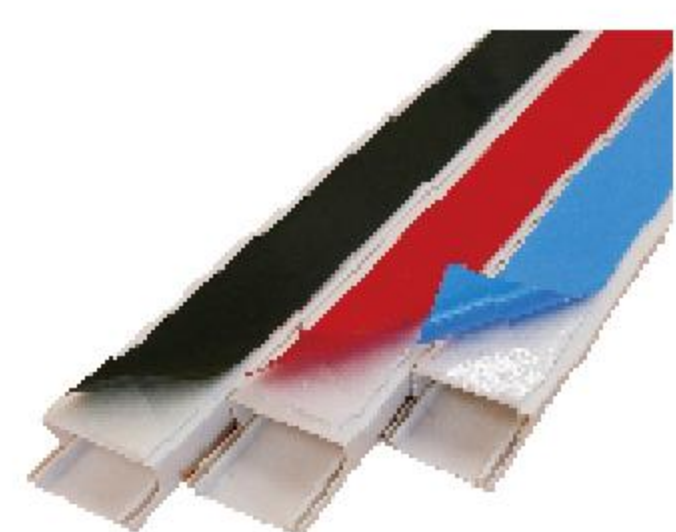
Model	VEN/2001W
QTY	3
CBM	0.05
GW	16.5
Voltage	220V



Model	VEN/1023W	1023B
QTY	4	
CBM	0.039	
GW	13	
Voltage	220V	



Model	M/1616 2M	2010 2M	2516 2M	2525 2M	4020 2M	4025 2M	5025 2M	5050 2M	6040 2M	10040 2M	10050 2M
QTY	100		50		30			20		10	8
CBM	0.06	0.04	0.049	0.07	0.048	0.06	0.075	0.12	0.12	0.1	0.08
GW	19	18	12.8	18.4	13	16	18	17.4	17.2	14.6	13.5



Model	M/1616 2M	2010 2M	2516 2M	2525 2M	4020 2M	4025 2M	5025 2M	5050 2M	6040 2M	10040 2M	10050 2M
QTY	100		50		30			20		10	8
CBM	0.05	0.04	0.04	0.063	0.048	0.06	0.075	0.1	0.096	0.08	0.08
GW	20	18	12.5	18.5	13	16	18	16	18.5	15	13.5



Model	1906	1906s	1908	1908s	1910	1910s	1912	1912s
QTY	80							
CBM	0.045	0.043	0.061	0.043	0.067	0.043	0.046	0.063
GW	6.6	11.2	12.5	18	12	26.3	10	24.6



Model	0.15MM*8MM*6Y	8Y	10Y
QTY	500		
CBM	0.033		
GW	13.75	16.5	19.75



Model	ETK O3L-4P/32-160A	200-250A	ETK N3L-4P/32-125A	160-250A	300-400A	500-630A	800-1000A
QTY	4			2	1		
CBM	0.08		0.073	0.069	0.105	0.248	
GW	19.55		20.65	19.65	27.9	28.7	43.65



2018

QTY	100	GW	2.5	CBM	0.05
-----	-----	----	-----	-----	------



YAS-40

QTY	100	GW	11.3	CBM	0.08
-----	-----	----	------	-----	------



Model	IRON/ Y10way	Y16way
QTY	8	6
CBM		
GW		



Model	PLASTIC/ Y6way	Y8way
QTY	20	
CBM		
GW		



13P

QTY	400	GW	20	CBM	0.017
-----	-----	----	----	-----	-------



Model	2704/EF
QTY	40
CBM	0.152
GW	14.2



Model	2706/EF
QTY	30
CBM	0.126
GW	12.1



Model	2702/A
QTY	100
CBM	0.08
GW	23.6



Model	2739/EF
QTY	6
CBM	0.14
GW	11.5



Model	2704/A
QTY	120
CBM	0.06
GW	16.7



Model	8282M
QTY	12
CBM	0.12
GW	16.5



Model	50*50	80*50	85*85*50	100*100*70	150*110*70	150*150*70	200*100*70	200*155*80	200*200*80	255*200*80	300*250*120	300*250*120	400*350*120	400*350*120
QTY	320	240	200	100	60	60	50	40	36	30	20	10	10	5
CBM	0.079	0.103	0.097	0.097	0.096	0.118	0.096	0.115	0.137	0.130	0.206	0.110	0.189	0.094
GW	16.5	23	23	18.8	15.8	20.5	17	17	21.7	19.5	24	12.3	20	10



Model	40W	30W	20W
QTY	60		
CBM	0.075	0.11	
GW	10.8	15	



Model	S19	LED S/19	19C	19W	LED/9W	18W
QTY	100			25		
CBM	0.063	0.096	0.02	0.04		
GW	11	10	11	3.6	6.3	



Model	D-106 1*18W	D-112 2*18W	D206 1*36W	D-212 2*36W
QTY	20			
CBM	0.06	0.08	0.11	0.15
GW	20	26.7	23.7	31.2



Model	R311/9W LED	R311/18W LED
QTY	60	
CBM	0.023	0.047
GW	7	16



Model	ABP6-15F 240*240	ABP8-20F 300*300	ABP10-25F 340*340	ABP12-30F 400*400
QTY	10	8		
CBM	0.12	0.09	0.16	0.22



Model	BPT10-30L/310*310	285*285	BPT8-25L/250*250
QTY	8		
CBM	0.174	0.122	0.097



5EB

QTY	GW	CBM
240	17	0.083



6EA

QTY	GW	CBM
240	17	0.083



6EB

QTY	GW	CBM
240	17	0.083



7EB

QTY	GW	CBM
240	17	0.083



8EA

QTY	GW	CBM
240	17	0.083



9EB

QTY	GW	CBM
240	17	0.083



1060-MN LIGHT 1P

QTY	GW	CBM
240	16	0.035



7442D

QTY	GW	CBM
200	22.8	0.082



7442I

QTY	GW	CBM
200	22.8	0.082



7442D

QTY	GW	CBM
200	22.8	0.082



7442I

QTY	GW	CBM
200	22.8	0.082



Y85810

QTY	GW	CBM
200	23	0.079



Y5820

QTY	GW	CBM
200	24.5	0.079



Y5830

QTY	GW	CBM
200	24.5	0.079



9420

QTY	GW	CBM
1200	31	0.091



Model	1931-LW25/2P32	2P63	2P100	2P125	3P32	3P63	3P100A	3P125A	4P32	4P63	4P100	4P125	4P160
QTY	20	12			20	12		20	12		20	12	
CBM	0.047				0.054				0.047	0.054	0.077		
GW	11.5	12.5	18	18	12	19	19	13	13	15	20	20	22



8422

QTY	GW	CBM
1200	23	0.75



7422A

QTY	GW	CBM
1200	23	0.079



Model	TG215 (5-15A)	TG230 (10-30A)	TG260 (30A-60A)	TG215500 (5-15A)	TG230500 (10-30A)	TG260500 (10-30A)	TG415 (5-15A)	TG430 (10-30A)	TG460 (30A-60A)	TG415500 (5-15A)	TG430500 (10-30A)	TG460500 (10-30A)
QTY	40			30			30					
CBM	0.057			0.064			0.07					
GW	20			28			31.8					



Model	PG215 (5-15A)	PG230 (10-30A)	PG245 (15-45A)	PG260 (30A-60A)	PG215500 (5-15A)	PG230500 (10-30A)	PG245500 (10-30A)	PG260500 (10-30A)	PG415 (5-15A)	PG430 (10-30A)	PG445 (15-45A)	PG460 (30A-60A)	PG415500 (5-15A)	PG430500 (10-30A)	PG460500 (10-30A)
QTY	50			30			30								
CBM	0.08			0.07			0.07								
GW	28.2	29.6	29.8	31.2	29.2	30.5	31.8								



Model	10A 10mm <sup>2</sup> W	10A 10mm <sup>2</sup> B	30A 16mm <sup>2</sup> W	30A 16mm <sup>2</sup> B	60A 25mm <sup>2</sup> W	60A 25mm <sup>2</sup> B	80A 35mm <sup>2</sup> W	80A 35mm <sup>2</sup> B	150A 50mm <sup>2</sup> W	150A 50mm <sup>2</sup> B
QTY	1000		300		200		100		50	
CBM	0.022		0.031				0.022			
GW	16		21		24		17			



Model	12MM 1.2M	12MM 1.5M	12MM 1.8M	12MM 2M	13MM 1.2M	13MM 1.5M	13MM 1.8M	13MM 2M	13.5MM 1.2M	13.5MM 1.5M	13.5MM 1.8M	13.5MM 2M
QTY	20	10	10	10	20	10	10	10	20	10	10	10
CBM	0.0063	0.004	0.0047	0.0053	0.0074	0.0046	0.0056	0.0062	0.008	0.005	0.006	0.0067
GW	21.5	13.4	16.1	17.9	25.2	15.8	18.9	21	27.2	17	20.4	22.7



Model	2021-Y-P002
QTY	50
CBM	0.065
GW	10.5



Model	2P-32A	2P-63A	2P-100A	2P-225A	3P-32A	3P-63A	3P-100A	3P-225A	4P-63A	4P-100A	4P-160A	4P-225A	/Copper
QTY	60	30	24	8	40	24	18	4	12	12	8	4	
CBM	0.047	0.04	0.04	0.048	0.05	0.051	0.055	0.027	0.037	0.045	0.045	0.033	
GW	12.8	10.2	11	11.5	16	16	17	9	12	15	14	11	



Model	CM/	63/3300	125/3300	125/4300	250/3300	250/4300	400/3300	630/3300	630/4300	800/3300	800/4300	1250/3300	1250/4300
QTY		24	18	18	12	12	4	4	4	2	2	1	1
CBM													
GW													



Model	iX 1P	iX 2P	iX 3P	iX 4P	iX DPN	iX iID 2P	iX iD 4P
QTY	240	120	80	60	240	100	50
CBM	0.038	0.038	0.038	0.038	0.038	0.035	0.036
GW	26	26	26	26	26.5	22	19



Model	YBR-207 125A	YBR-2011 125A	YBR-215 125A	YBR-407 125A	YBR-411 125A	YBR-415 125A
QTY	200	100	100	100	50	50
CBM	0.048	0.051	0.047	0.05	0.046	0.052
GW	24	21	23	24	20.5	22.5



Model	URB-3/3	URB-3/5	URB-4/3	URB-4/5	URB-5/3	URB-5/5
QTY	24					
CBM	0.048	0.048	0.057	0.057	0.066	0.066
GW	12.5	14.5	14	16	19	21



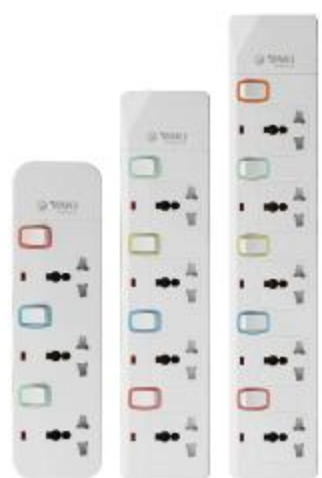
Model	YAKI-1004 3M	YAKI-1005 3M	YAKI-1004U 3M	YAKI-1005U 3M	YAKI-2004PUC 3M
QTY	30	30	30	25	24
CBM	0.05	0.05	0.05	0.05	0.05
GW	19.6	21	25.5	27	36.2



Model	Y303S 3M	Y304S 3M	Y305S 3M
QTY	24		
CBM	0.032	0.038	0.045
GW	9	11	15



Model	YQ813 3M 3USB+C	YQ814 3M 3USB+C	YQ815 3M 3USB+C
QTY	50		
CBM	0.035		
GW	30		



Model	Y303M 3M	Y304M 3M	Y305M 3M
QTY	30		
CBM	0.046	0.054	0.063
GW	12.5	18.4	22



Model	YQ913 3M 3USB+C	YQ914 3M 3USB+C	YQ915 3M 3USB+C
QTY	50		
CBM	0.035		
GW	30		



Model	6403	6406	6410	9047	9048
QTY	100	100	50	100	50
CBM	0.024	0.039	0.032	0.028	0.024
GW	7.65	8.5	6	8.3	6



Model	YP4733	YP4736
QTY	200	100
CBM	0.068	0.06
GW	13.8	10.1



Model	Y3X3PVC-3.2MM	Y3X6PVC-3.5MM
QTY	200	120
CBM	0.06	0.06
GW	12.4	12.15



Model	3x3 0.6mm	3x3 0.8mm	3x3 1mm	3x3 0.6mm with move ear & spacer	3x3 0.8mm with move ear & spacer	3x3 1mm with move ear & spacer	3x6 0.6mm	3x6 0.8mm	3x6 1mm	3x3 1+1 0.6mm	3x3 1+1 0.8mm	3x3 1+1 1mm	3x3 1+1 0.6mm	3x3 1+1 0.8mm	3x3 1+1 1mm	
QTY	200						100			80						
CBM	0.041	0.05	0.044	0.041	0.041	0.041	0.041	0.05	0.045	0.05	0.05	0.05	0.05	0.061	0.061	0.061
GW	16	28	21	16	16	16	16	28	21	20	20	20	20	23	23	23

YABAI SERIES ❖❖



**YB101/102**

One gang one way  
One gang two way  
QTY:10/100pcs  
CBM:0.031/GW:10.7/11kg



**YB201/202**

Two gang one way  
Two gang two way  
QTY:10/100pcs  
CBM:0.031/GW:11.49/12.27kg



**YB301/302**

Three gang one way  
Three gang two way  
QTY:10/100pcs  
CBM:0.031/GW:12.03/13.38kg



**YB401/402**

Four gang one way  
Four gang two way  
QTY:10/100pcs  
CBM:0.031/GW:13.25/14.54kg



**YB413L**

2G universal socket with neon

QTY:5/50pcs  
CBM:0.031/GW:11kg



**YB113L**

1G 13A socket with neon

QTY:10/100pcs  
CBM:0.031/GW:11.65kg



**YB115L**

1G 15A socket with neon

QTY:10/100pcs  
CBM:0.031/GW:11.7kg



**YB313L**

1G universal socket with neon

QTY:10/100pcs  
CBM:0.031/GW:11.6kg



**YB112L**

1G 16A socket+13A universal socket with neon

QTY:10/100pcs  
CBM:0.031/GW:11kg



**YB213**

2G double 13A socket

QTY:5/50pcs  
CBM:0.031/GW:11kg



**YB113 USB**

1G 13A socket+2USB

QTY:10/100pcs  
CBM:0.031/GW:11kg



**YB120**

20A switch with neon

QTY:10/100pcs  
CBM:0.031/GW:14.56kg



**YB145**

45A switch with neon

QTY:10/100pcs  
CBM:0.031/GW:10.97kg



**YB103**

Bell switch

QTY:10/100pcs  
CBM:0.031/GW:10.73kg



**YB115**

Keycard power switch

QTY:10/100pcs  
CBM:0.031/GW:11kg



**YB213 USB**

2G double 13A socket+2USB

QTY:5/50pcs  
CBM:0.031/GW:11kg



YAKI·V SERIES ❖❖



**VH010/H011**

One gang one way  
One gang two way

QTY:10/100pcs  
CBM:0.025/GW:7.2/7.86kg



**VH012/H013**

Two gang one way  
Two gang two way

QTY:10/100pcs  
CBM:0.025/GW:8.5/9.26kg



**VH014/H015**

Three gang one way  
Three gang two way

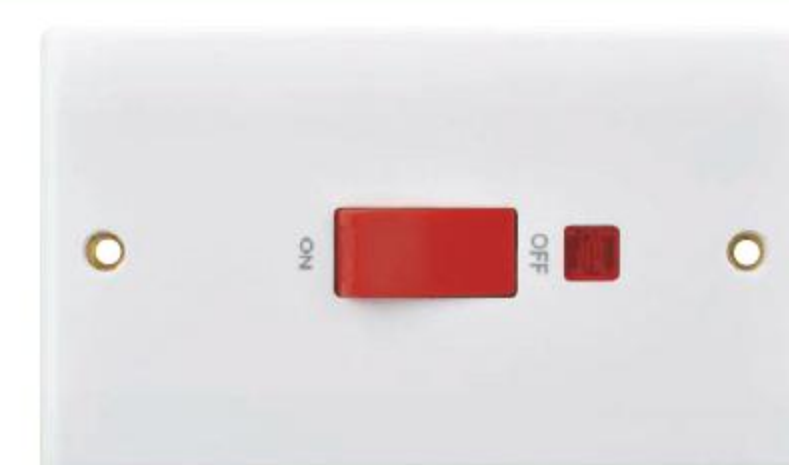
QTY:10/100pcs  
CBM:0.026/GW:9.6/10.36kg



**H023**

Bell switch

QTY:10/100pcs  
CBM:0.026/GW:7.35kg



**VH073**

45A 3\*6 switch with neon

QTY:10/100pcs  
CBM:0.036/GW:11.5kg



**VH092**

1G 13A socket with neon

QTY:10/100pcs  
CBM:0.031/GW:12.8kg



**VH095A**

1G universal socket with neon

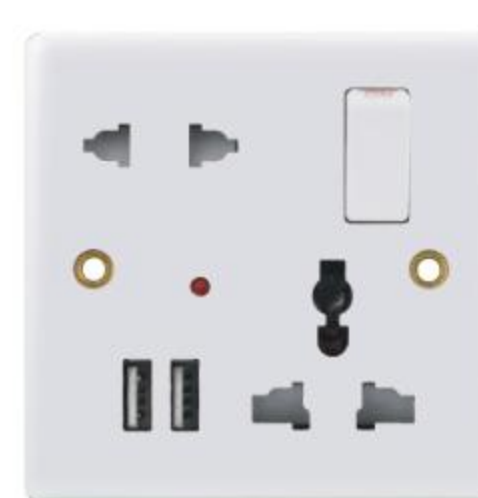
QTY:10/100pcs  
CBM:0.031/GW:12.9kg



**H098**

1G 16A socket+13A universal socket with neon

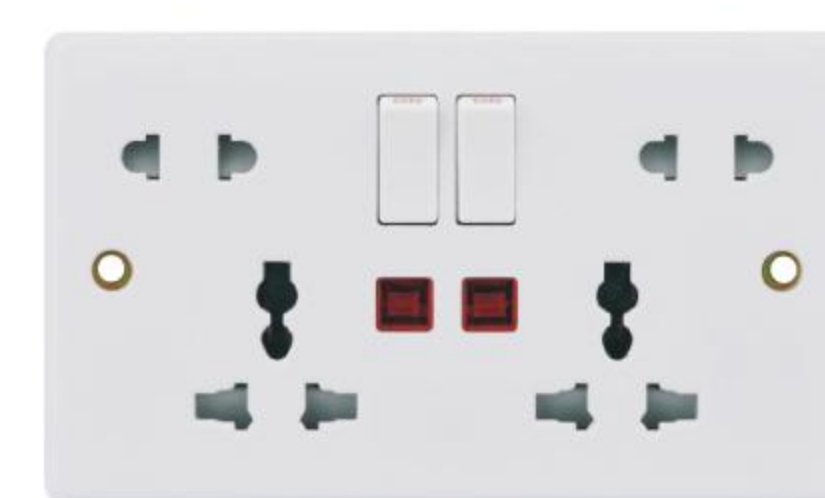
QTY:10/100pcs  
CBM:0.033/GW:12.45kg



**VH099**

1 gang 5hole socket with neon +2USB

QTY:10/100pcs  
CBM:0.033/GW:14.2kg



**VH088**

2G double universal socket with neon

QTY:5/50pcs  
CBM:0.029/GW:11.5kg



**VH120**

1G 15A socket with neon

QTY:10/100pcs  
CBM:0.029/GW:14kg



**VH061**

20A switch with neon

QTY:10/100pcs  
CBM:0.026/GW:12.26kg



**VH071**

45A switch with neon

QTY:10/100pcs  
CBM:0.043/GW:17.5kg



**VH157**

Tel socket

QTY:10/100pcs  
CBM:0.033/GW:8.7kg



**VH166**

Satellite socket

QTY:10/100pcs  
CBM:0.025/GW:8.7kg



**VH089**

2G universal socket with neon

QTY:5/50pcs  
CBM:0.029/GW:10.5kg

YAKI-V SERIES ✖



V2-001 / 002

1GANG 1WAY  
1GANG 2WAY  
QTY:100pcs  
CBM:0.032/GW:12.03kg



V2-003 / 004

2GANG 1WAY  
2GANG 2WAY  
QTY:100pcs  
CBM:0.032/GW:11.55kg



V2-005 / 006

3GANG 1WAY  
3GANG 2WAY  
QTY:100pcs  
CBM:0.032/GW:12.21kg



V2-007 / 008

4GANG 1WAY  
4GANG 2WAY  
QTY:100pcs  
CBM:0.032/GW:12.57kg



V2-009

BELL SWITCH  
QTY:100pcs  
CBM:0.032/GW:11.5kg



V2-051

double 13A switch  
socket with neon  
QTY:60pcs  
CBM:0.032/GW:12.5kg



V2-020

13A Switched universal  
socket with neon  
QTY:100pcs  
CBM:0.032/GW:12.24kg



V2-022

Switched socket  
with neon  
QTY:100pcs  
CBM:0.032/GW:12.28kg



V2-023

13A multiplicity  
light+2USB  
QTY:100pcs  
CBM:0.032/GW:11.5kg



V2-024

15A switched socket  
with neon  
QTY:100pcs  
CBM:0.032/GW:12.28kg



V2-025

Switched socket  
with neon  
QTY:100pcs  
CBM:0.032/GW:11.5kg



V2-053

Double switch socket  
with neon  
QTY:60pcs  
CBM:0.032/GW:12.5kg



V2-028

20A red switch  
with neon  
QTY:100pcs  
CBM:0.032/GW:11.5kg



V2-030

20A red switch  
with neon  
QTY:100pcs  
CBM:0.032/GW:11.5kg



V2-032

45A switch  
with neon  
QTY:100pcs  
CBM:0.032/GW:11.5kg



V2-038

Fan with  
gear switch  
QTY:60pcs  
CBM:0.032/GW:11.5kg



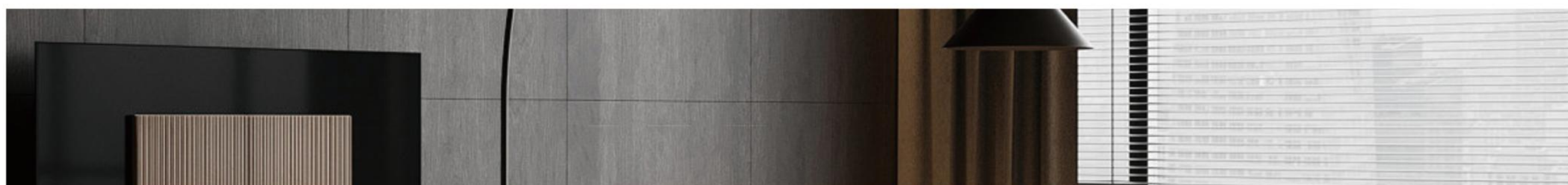
V2-045

satellite  
socket  
QTY:100pcs  
CBM:0.032/GW:11.5kg



V2-056

7\*14 switch  
with neon  
QTY:60pcs  
CBM:0.032/GW:12.5kg



G3.5 SERIES ✖



G3.5-101G G3.5-102G

One gang one way  
One gang two way  
QTY:100pcs  
CBM:0.032/GW:8kg



G3.5-201G G3.5-202G

Two gang one way  
Two gang two way  
QTY:100pcs  
CBM:0.032/GW:8.5kg



G3.5-301G G3.5-302G

Three gang one way  
Three gang two way  
QTY:100pcs  
CBM:0.032/GW:9kg



G3.5-401G G3.5-402G

four gang one way  
four gang two way  
QTY:100pcs  
CBM:0.032/GW:9.5kg



G3.5-413LG

double universal with light  
multifunctional three switch socket  
QTY:50pcs  
CBM:0.032/GW:10kg



G3.5-112LG

5pin univser Switch  
socket with neon  
QTY:100pcs  
CBM:0.032/GW:10kg



G3.5-113LG

13A Switch socket  
with neon  
QTY:100pcs  
CBM:0.032/GW:10kg



G3.5-115LG

15A Switch socket  
with neon  
QTY:100pcs  
CBM:0.032/GW:10kg



G3.5-145G

45A switch  
with neon  
QTY:100pcs  
CBM:0.032/GW:12kg



G3.5-413LG+USB

Double universal with light +USB  
multifunctional three switch socket  
QTY:50pcs  
CBM:0.032/GW:10kg



G3.5-109G

TV socket  
QTY:100pcs  
CBM:0.032/GW:10kg



G3.5-118G

Satellite socket  
QTY:100pcs  
CBM:0.032/GW:9kg



G3.5-114G

Tel socket  
QTY:100pcs  
CBM:0.032/GW:9.5kg



G3.5-120G

20A switch  
with neon  
QTY:100pcs  
CBM:0.032/GW:10kg



G3.5-111G

Fan speed  
dimmer switch  
QTY:100pcs  
CBM:0.032/GW:9kg



G3.5-413LG BIG+USB

Double universal with light  
multifunctional three switch socket  
QTY:50pcs  
CBM:0.032/GW:10kg

YAKI-H8 SERIES ✨



**H8-101/102**

One gang one way  
One gang two way  
QTY:10/100pcs  
CBM:0.032/GW:13.04kg



**H8-201/202**

Two gang one way  
Two gang two way  
QTY:10/100pcs  
CBM:0.032/GW:13.41kg



**H8-301/302**

Three gang one way  
Three gang two way  
QTY:10/100pcs  
CBM:0.032/GW:13.8kg



**H8-401/402**

Four gang one way  
Four gang two way  
QTY:10/100pcs  
CBM:0.032/GW:14.18kg



**H8-345L**

146 45A  
QTY:5/50pcs  
CBM:0.032/GW:9kg



**H8-blank plate**

blank plate 86 size  
QTY:20/200pcs  
CBM:0.032/GW:15.04kg



**H8-313L**

3pin multi switched socket  
with neon, SP (13A)  
QTY:10/100pcs  
CBM:0.032/GW:12.82kg



**H8-112L**

13A 1 gang switched  
5 pin MF socket, neon  
QTY:10/100pcs  
CBM:0.032/GW:1.5kg



**H8-313L U+C**

13A 1 gang switched MF socket  
1 USB + 1 type C, neon  
QTY:10/100pcs  
CBM:0.032/GW:9.91kg



**H8-413L**

13A 2 gang switched MF  
socket with neon  
QTY:5/50pcs  
CBM:0.032/GW:13.15kg



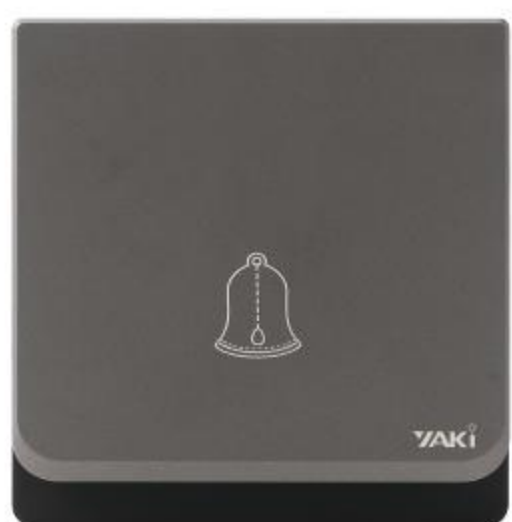
**H8-114**

Tel socket (2 core)  
QTY:10/100pcs  
CBM:0.032/GW:8.16kg



**H8-119**

Computer Data socket  
QTY:10/100pcs  
CBM:0.032/GW:8.16kg



**H8-103**

doorbell switch  
QTY:10/100pcs  
CBM:0.032/GW:10.49kg



**H8-118**

satellite socket +  
telephone socket (2 core)  
QTY:10/100pcs  
CBM:0.032/GW:10.22kg



**H8-113L**

13A switched socket  
with neon, SP (13A)  
QTY:10/100pcs  
CBM:0.032/GW:12.82kg



**H8-213L**

13A 2 gang DP switched  
socket, neon  
QTY:5/50pcs  
CBM:0.032/GW:13.15kg



**H8-101/102**

One gang one way  
One gang two way  
QTY:10/100pcs  
CBM:0.032/GW:13.04kg



**H8-201/202**

Two gang one way  
Two gang two way  
QTY:10/100pcs  
CBM:0.032/GW:13.41kg



**H8-301/302**

Three gang one way  
Three gang two way  
QTY:10/100pcs  
CBM:0.032/GW:13.8kg



**H8-401/402**

Four gang one way  
Four gang two way  
QTY:10/100pcs  
CBM:0.032/GW:14.18kg



**H8-345L**

146 45A  
QTY:5/50pcs  
CBM:0.032/GW:9kg



**H8-blank plate**

blank plate 86 size  
QTY:20/200pcs  
CBM:0.032/GW:15.04kg



**H8-313L**

3pin multi switched socket  
with neon, SP (13A)  
QTY:10/100pcs  
CBM:0.032/GW:12.82kg



**H8-112L**

13A 1 gang switched  
5 pin MF socket, neon  
QTY:10/100pcs  
CBM:0.032/GW:1.5kg



**H8-313L U+C**

13A 1 gang switched MF socket  
1 USB + 1 type C, neon  
QTY:10/100pcs  
CBM:0.032/GW:9.91kg



**H8-413L**

13A 2 gang switched MF  
socket with neon  
QTY:5/50pcs  
CBM:0.032/GW:13.15kg



**H8-114**

Tel socket (2 core)  
QTY:10/100pcs  
CBM:0.032/GW:8.16kg



**H8-119**

Computer Data socket  
QTY:10/100pcs  
CBM:0.032/GW:8.16kg



**H8-103**

doorbell switch  
QTY:10/100pcs  
CBM:0.032/GW:10.49kg



**H8-118**

satellite socket +  
telephone socket (2 core)  
QTY:10/100pcs  
CBM:0.032/GW:10.22kg



**H8-113L**

13A switched socket  
with neon, SP (13A)  
QTY:10/100pcs  
CBM:0.032/GW:12.82kg



**H8-213L**

13A 2 gang DP switched  
socket, neon  
QTY:5/50pcs  
CBM:0.032/GW:13.15kg

# ONE-STOP SOLUTION

For Electrical  
Engineering  
Products



## Let's have a quality life

"Let's Have a Quality Life " Is the slogan of the YAKI brand that strives to improve the quality of life in Africa. Our goal is to help people create a safer, happier and more meaningful lifestyle. We offer a range of products and services that are dedicated to improving the quality of life of people in Africa. We believe that everyone should enjoy the beauty of life and make every day full of energy and joy.

**Innovative**  
**Reliable**  
**Sustainable**